



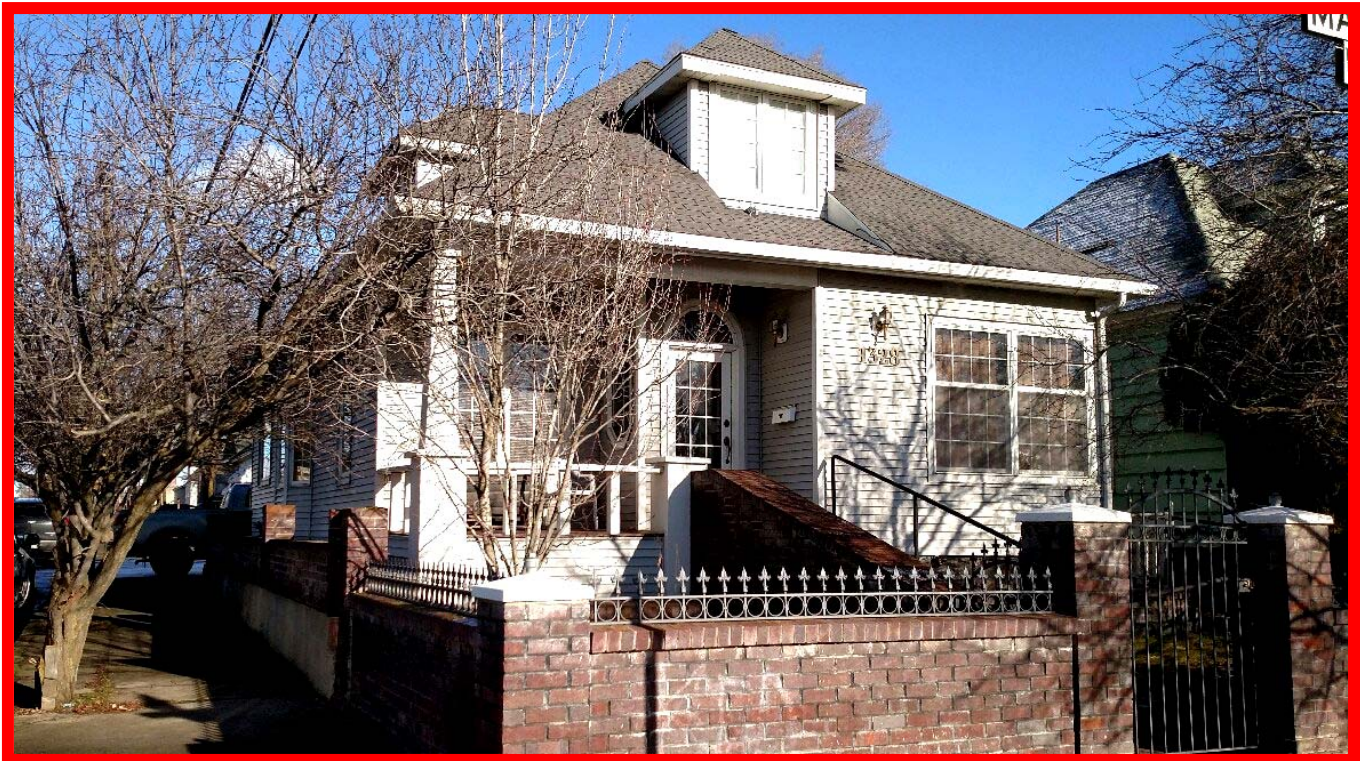
THE ROTHROCK COMPANY

*Imagination
Ingenuity
Integrity*

Commercial Real Estate Services ♦ Property Management ♦ Project Development Consulting

FOR SALE – COMMERCIAL ZONING

**Owner/User – Live/Work OR
Income Property Potential – NW CBD
1328 W. Mallon – 1,934 SF (County Assessed)**



Property Features

- *1328 W. Mallon – LIVE / WORK / ADA Access*
- *1,434 SF+/- Main Floor / 500 SF+/- Upper Floor*
- *Two Off-street Parking Spaces (back to back)*
- *Zoning City of Spokane O-35 (Office, Multi-Family)*
- *Parcel # 35182.4010 – 2,170 +/- SF Lot) Built 1904 / Remodeled 1995*
- *2017 Annual Property Taxes: \$1,707.45*
- *TWO BLOCKS FROM THE COURT HOUSE!*

Offered At: \$275,000 (Possible Owner Contract)

For Information Call: Todd X. Rothrock 509.953.6097

E. 5501 Broadway Avenue ♦ Spokane Valley, Washington ♦ 99212 ♦ Ph: 509.535.6100 ♦ Fax: 509.535.4308



ENTRY / WAITING ROOM



RECEPTION



FRONT OFFICE



2ND OFFICE

