



THE ROTHROCK COMPANY

*Imagination
Ingenuity
Integrity*

Commercial Real Estate Services ♦ Property Management ♦ Project Development Consulting

VALLEY INDUSTRIAL BUILDING FOR LEASE 5217 E. BROADWAY AVE. Spokane Valley, Washington 99212

FOR LEASE



Superb Office/Warehouse/Manufacturing space in the heart of the industrial area of Spokane Valley, fronting Broadway, minutes from I-90 and the future N/S Corridor. Comprised of nearly 18,000 square feet of office / warehouse, this property offers a unique setting and location.

Building Features

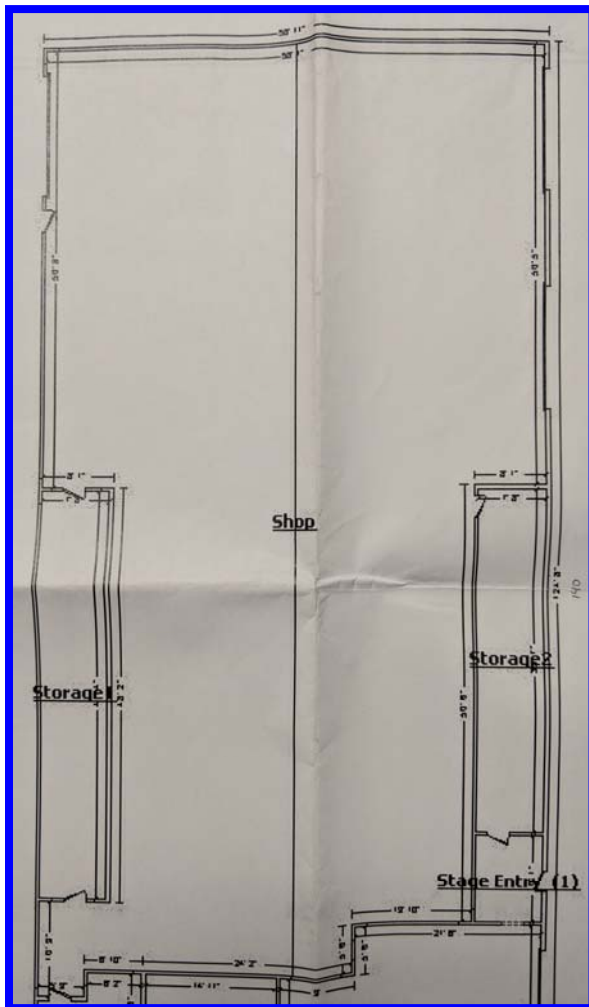
- Warehouse/Manufacturing Space: **7,500SF**
- Office: **5,700 SF**
- Ceiling Height – 18' Eve
- Six (6) Grade Level Overhead Doors
- Two (2) 3-Ton Overhead Cranes
- Lot Size: 53,200SF
- Fenced Yard – 22,500SF
- Term: 5 Years
- Lease Type: NNN

**Warehouse \$.45 cents per sf/month/NNN
Office \$.80 cents per sf/month/NNN**

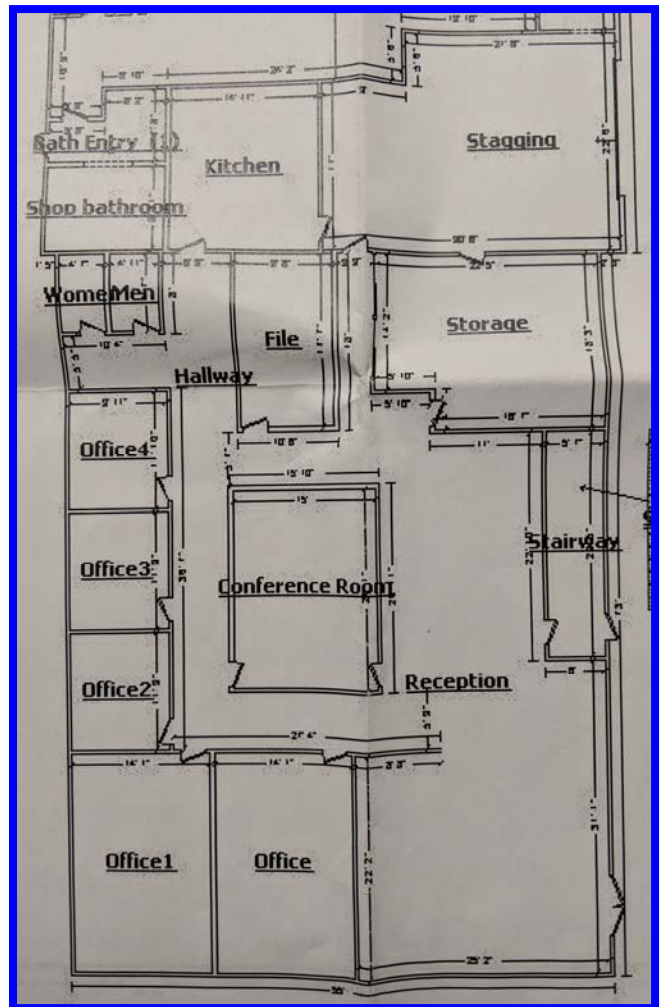
NNN are estimated at .10 Cents/SF/Month

AVAILABLE FEBRUARY 16, 2019

**For Additional Information Please Contact:
Todd X. Rothrock @ 509.953.6097**

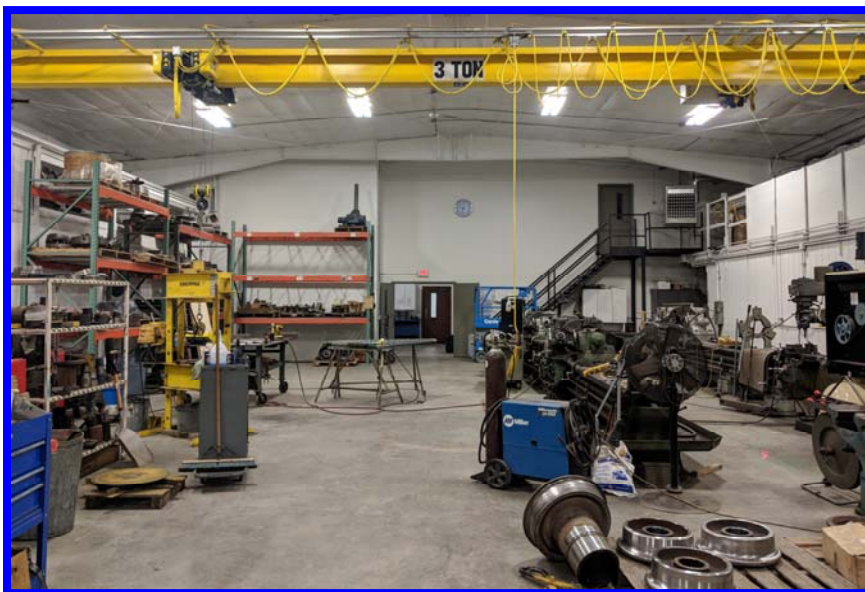


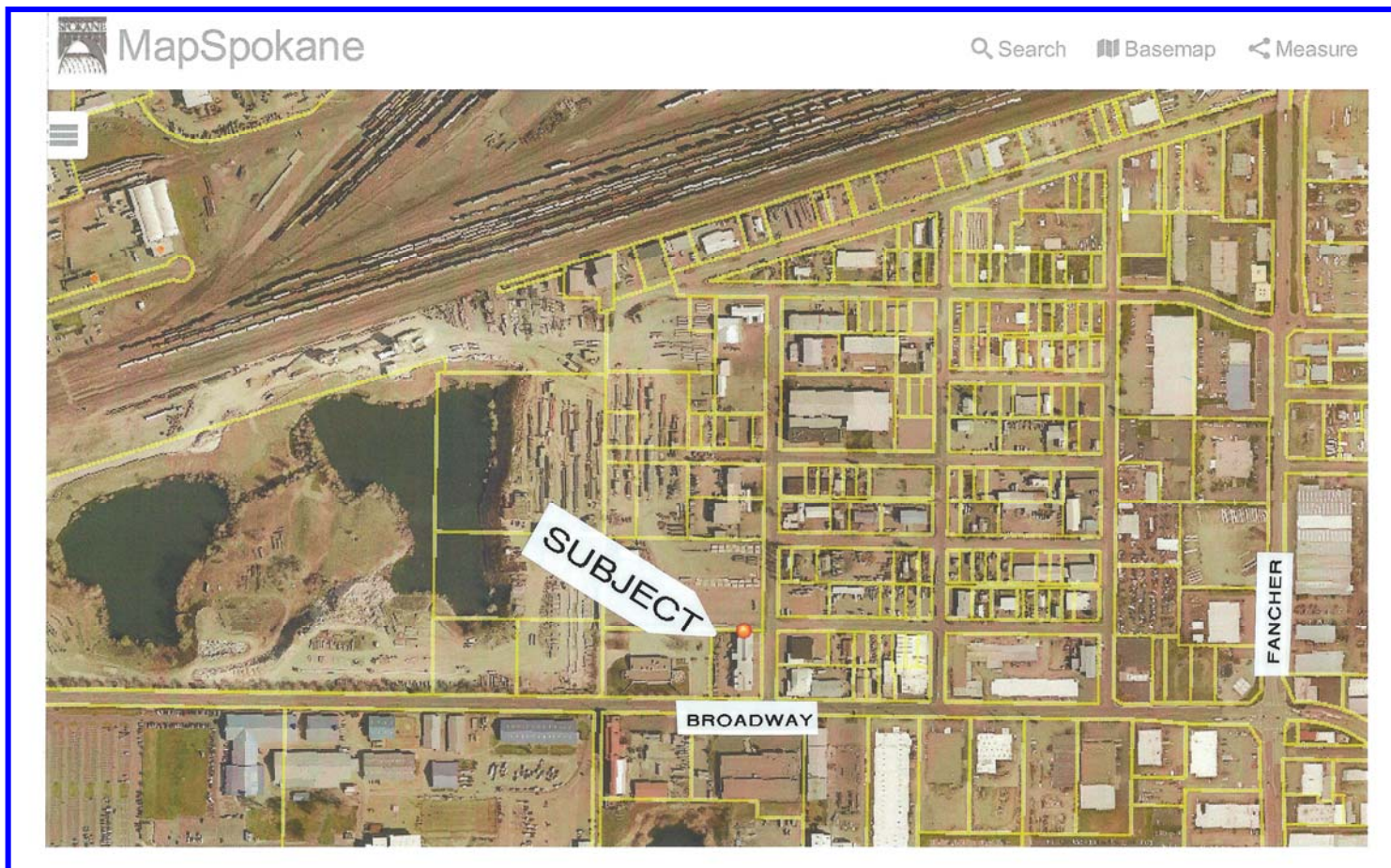
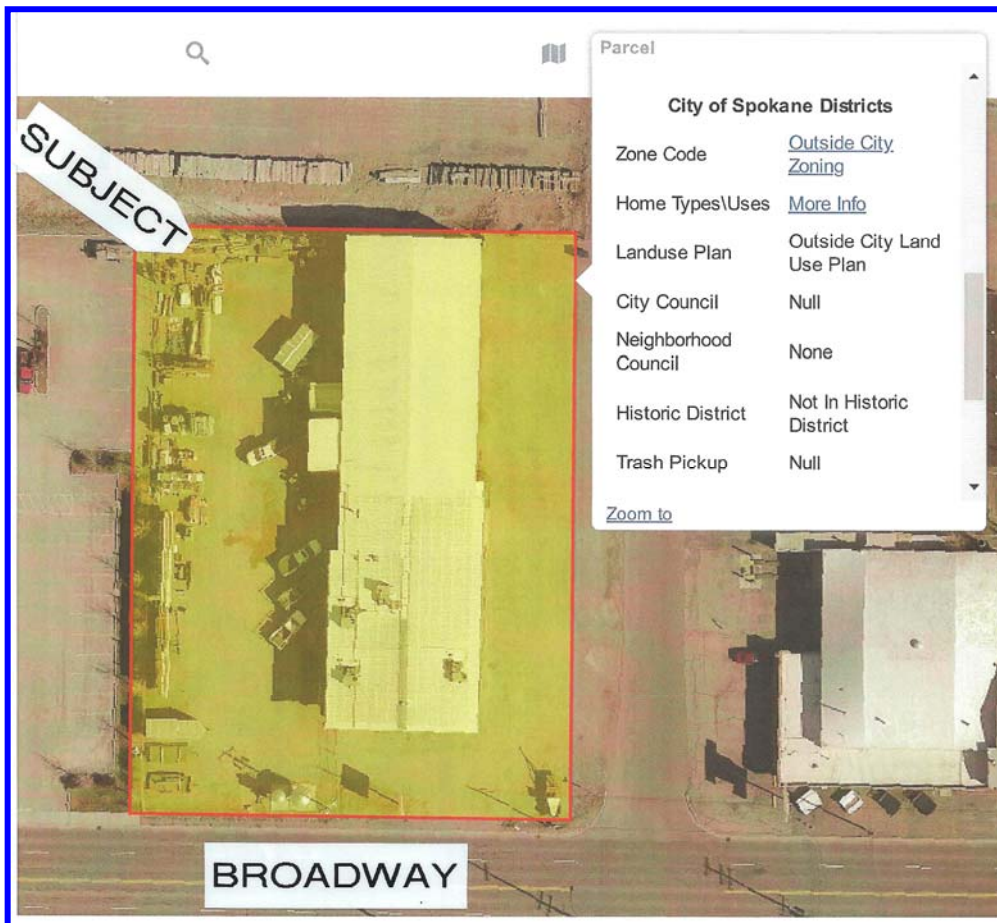
SHOP



OFFICE

E. 5501 Broadway Avenue • Spokane Valley, Washington • 99212 • Ph: 509.535.6100 • Fax: 509.535.4308





E. 5501 Broadway Avenue • Spokane Valley, Washington • 99212 • Ph: 509.535.6100 • Fax: 509.535.4308